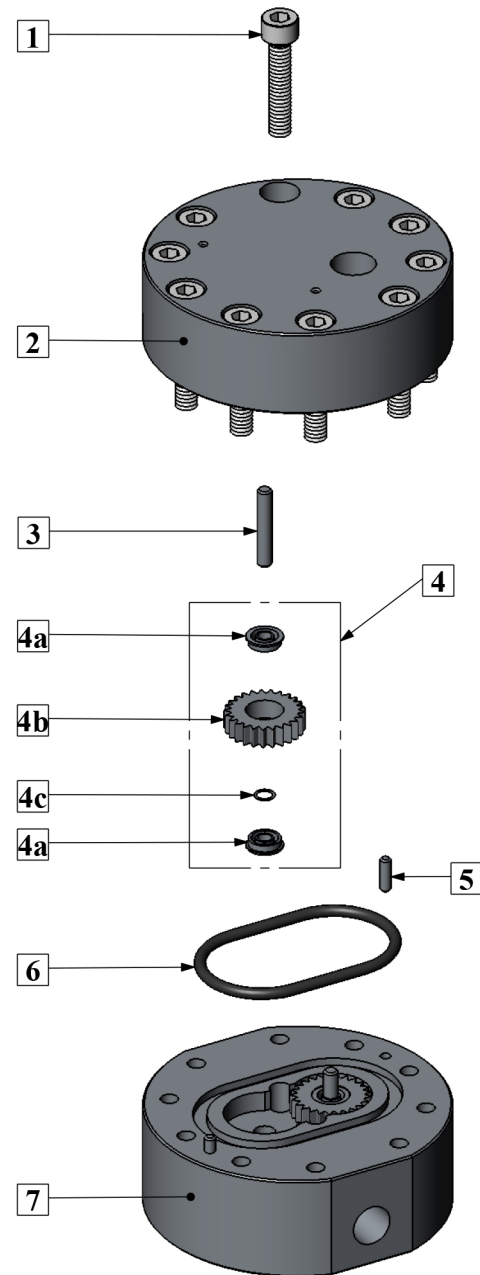


MAINTENANCE GUIDE FOR THE JVS-01UF MICROFLOW SERIES FLOW METER

Cleaning, inspecting or repairing a JVS-01UF, MicroFlow Series gear flow meter can be easily accomplished by following the procedures below.

1. Remove the Sensor from the flow meter body Upper Housing (2).
2. Remove the M6 Bolts (1) using a 5mm hex key. Keep the 2 opposing bolts near the Locating Pins (5) engaged by a few threads to avoid stress on the shafts and the locating pins during housing separation. **Please note the orientation of the Upper and Lower housings with respect to each other so that the meter is reassembled the same way.**
3. Holding the Upper Housing (2), gently tap on the top of the 2 opposing bolt heads to separate the Upper Housing (2) from the Lower Housing (7). **Do NOT use chisels or screwdrivers to split and pry apart the housings. This can cause damage to the meter bodies and meter internal parts.**
4. After separation, remove, clean and inspect the gear assemblies (4) and shafts (3). Clean out the o-ring groove, shaft holes and meter cavity.
IMPORTANT: The gear assembly consists of two bearings (4a), the Gear (4b), and a Bearing Spacer (4c). These parts are loosely fitted and can fall out. These parts are matched together and careful attention MUST be made to their orientation and location as they MUST be replaced the exact way they were.
5. After cleaning all parts completely, the Gear Assemblies (4), Shafts (3) and Locating Pins (5) can be reinserted. Check for free and easy rotation of the gears.
6. Replace the O-Ring (6). Teflon o-rings should always be replaced. Viton o-rings can be reused if they are not damaged.
7. During reassembly keep the meter housings as parallel as possible. Make sure the housings are orientated the same way they were prior to disassembly.
8. Replace the Bolts (1). Torque the bolts to 15Nm (11ft/lbs). Do not force the meter housings together. Do NOT use a hammer or other such device. Over tightening will not cause damage to the meter, but may fatigue the bolts and/or restrict the operation if internal surfaces are not completely clean.
9. After reassembly, **gently** blow air through the meter so the gears spin. This should be clearly audible given a moderate background noise level.
10. Clean any debris from the pickup hole before remounting the sensor to the Upper Housing (2).



CROSS REFERENCE GUIDE FOR JVS-01UF MICROFLOW SERIES SPARE PARTS

Part - Qty. per meter [Drawing Ref. #]	JVS-01UF-25-NPT	JVS-01UF-25-NPT-EX
Locating Pin - 2 [5]	AG15030 LP-CG Locating Pin	
Shaft - 2 [3]	AG12015 ST-12KG Shaft	
Gear Assembly - 2 [4]	BG10013 GR-01UF	
Teflon O-Ring - 1 [6]	AG15040 COT-15CG	
Viton O-Ring - 1 [6]	AG15045 COV-15CG	
Bolts - 10 [1]	AG15060 SC-M6x1-30mm - 10pcs	

Table Format:

AG15030	←
LP-CG Locating Pin	←

 _____ AW Part #
 _____ AW Part Description